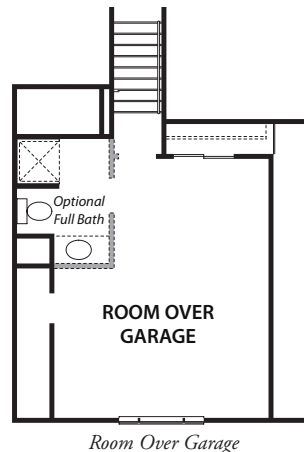
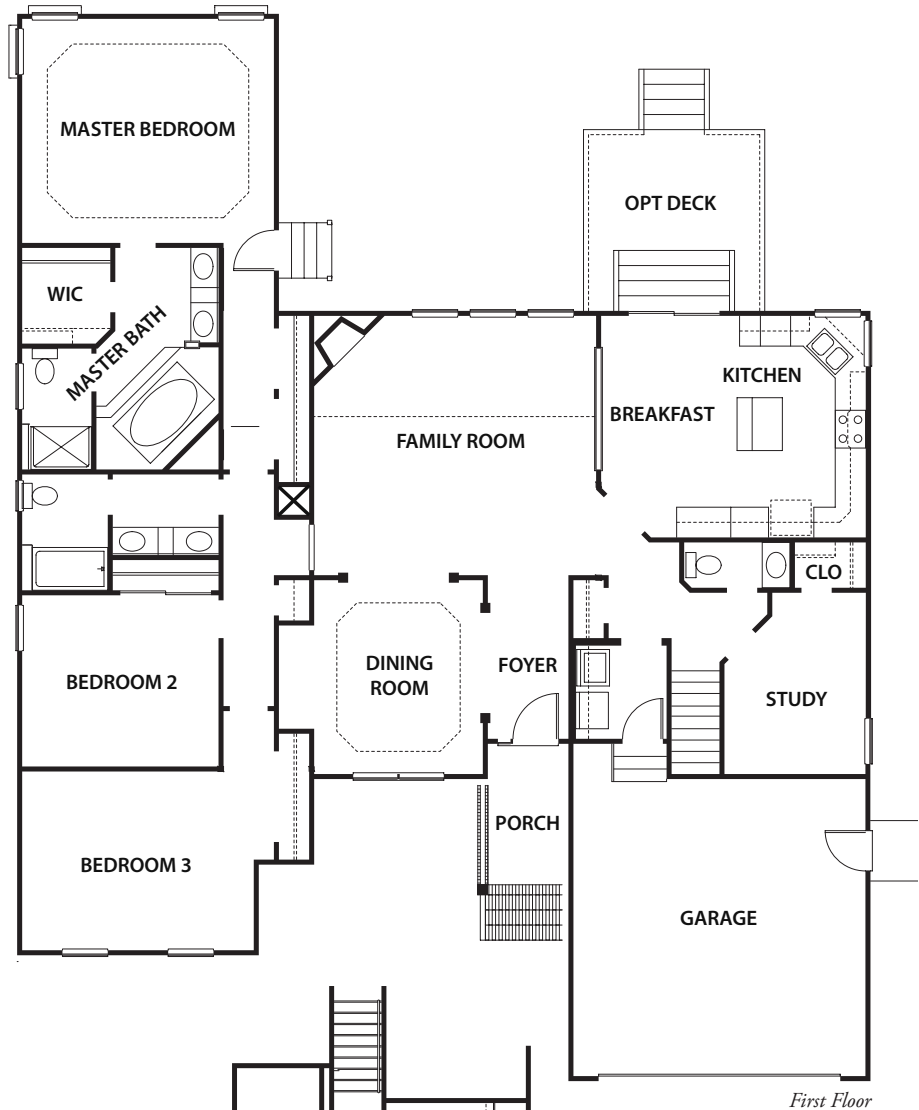




Maple II

A beautiful ranch with rooms that flow from one to another, creating a sumptuous home with style and comfort in mind. The brick ranch is bold and impressive with soaring ceilings, four bedrooms, two and a half baths with the option for a third full bath and bonus room over the two car garage. A flexible floor plan allows you to create a home just for you.

Approximate square footage: 2,630



First Floor

Room Over Garage



HOMES
by Gary Caruana

(757) 306-7700 | www.caruanahomes.com

Above deemed to be accurate but not warranted. Minor room size variations and reversed floorplans are subject to field conditions. Prices and specifications are based on the latest possible information available at time of publication. Builder reserves the right to make changes at any time without notice in specifications, prices, material, colors, equipment, and models.



Updated 9/07